

RC3 Inspection camera 15 m + **RUNPOSTICKS** Comfort Package

for pipe inspectionen up to 15 m

Item no.: 11149



DATA	
ITEM NO.:	11149
CABLE LENGTH	15 m
NET WEIGHT	2,383 kg
EAN-CODE	9120045477917
CAMERA REEL	Ø 260 mm x H 63 mm
MONITORMODUL	B 96 mm x L 172 mm x H 31 mm
CAMERA HEAD	Ø 13 mm - 998.400 pixels - Front and side camera
ILLUMINATION	Front: 8 x LED (integrated camera head) - dimmable Side: 1 x LED (integrated camera head) - dimmable
MONITOR	5" IPS (518.400 Pixel - 960 x 540) Color
ANGLE OF VIEW	70 °
PHOTO RESOLUTION	1920 x 1080 (JPG) Front and side camera
VIDEO RESOLUTION	1920 x 1080 (AVI) Front and side camera
FOCUS DISTANCE	Front: 30 mm – 80 mm / Seite: 20 mm – 40 mm
PROTECTION CLASS	IP 67 (camera head and cable)
BATTERY CAPACITY	3000 mAh Lithium-ion- battery (3 hours)
LANGUAGES	DE, EN, FR, ES, PT, NL, PL, CZ, HR
OPERATING SYSTEM	WLAN (Android 6.0+ / IOS 10.0+)

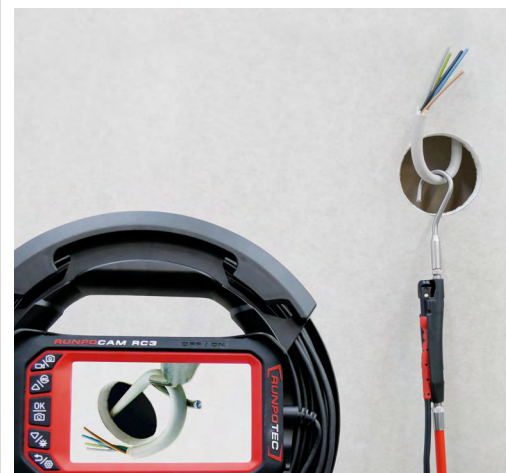
DESCRIPTION

The RC3 inspection camera (digital) combines innovative technology with smart connectivity to make professional inspections easier and more precise. Equipped with a flexible dual camera system, it delivers images and videos in full HD quality. The RC3 app enables the preservation of evidence, image archiving and comprehensive documentation of recordings, and it allows for easy sharing of images and videos. Reports with a company logo and description can be sent as a PDF via email or WhatsApp. The camera is perfect for use in areas that are difficult to access because it can be controlled via WLAN using the RC3 app on a smartphone. Whether it's hollow walls, pipes with an internal diameter of 14 mm or ventilation systems, the RC3 delivers razor-sharp images, can be conveniently operated via mobile devices and has an IP67 protection class. It should be noted that the camera can only be used in combination with the RUNPOTEC cable pulling systems (GF3, GF4.5, GF6, RUNPOSTICKS and RP1), with different systems being used depending on the application.

Scope of supply:

1 x RC3 inspection camera (box incl. monitor module, cable incl. camera head 15 m), incl. 8-parts accessories, 1 x RUNPOSTICKS Comfort Package (scope of supply see website)

Application example
Cavity wall inspection/ search and capture

**ADVANTAGES**

- Pipe inspections from Ø14 mm ID
- Inspection of ventilation pipes, drainage pipes, sewage pipes etc.
- For cavity inspections and suspended ceilings
- Camera head with front and side camera incl. 8 x LED lights - dimmable
- RC3 can be operated via WLAN and RC3 app (optional)
- Preservation of evidence, image archiving, documentation of recordings
- Protection class IP 67 (camera head and cable)
- Battery life 3 hours
- Box with rotating handle and grip
- Accessory box (8-parts)

INFORMATION

Combinable pulling systems:

RP1 cable pulling tape Ø 4 mm

5 - 30 m - Item no.: 30027 - 30043



GF3 Fiberglass rod Ø 3 mm

with or without meter counter

20 - 50 m - Item no.: 10192 - 10195

20 - 50 m - Item no.: 10196 - 10198



Fiberglass rod

GF4.5, GF6



RUNPOSTICKS

Comfort - Item no.: 10020

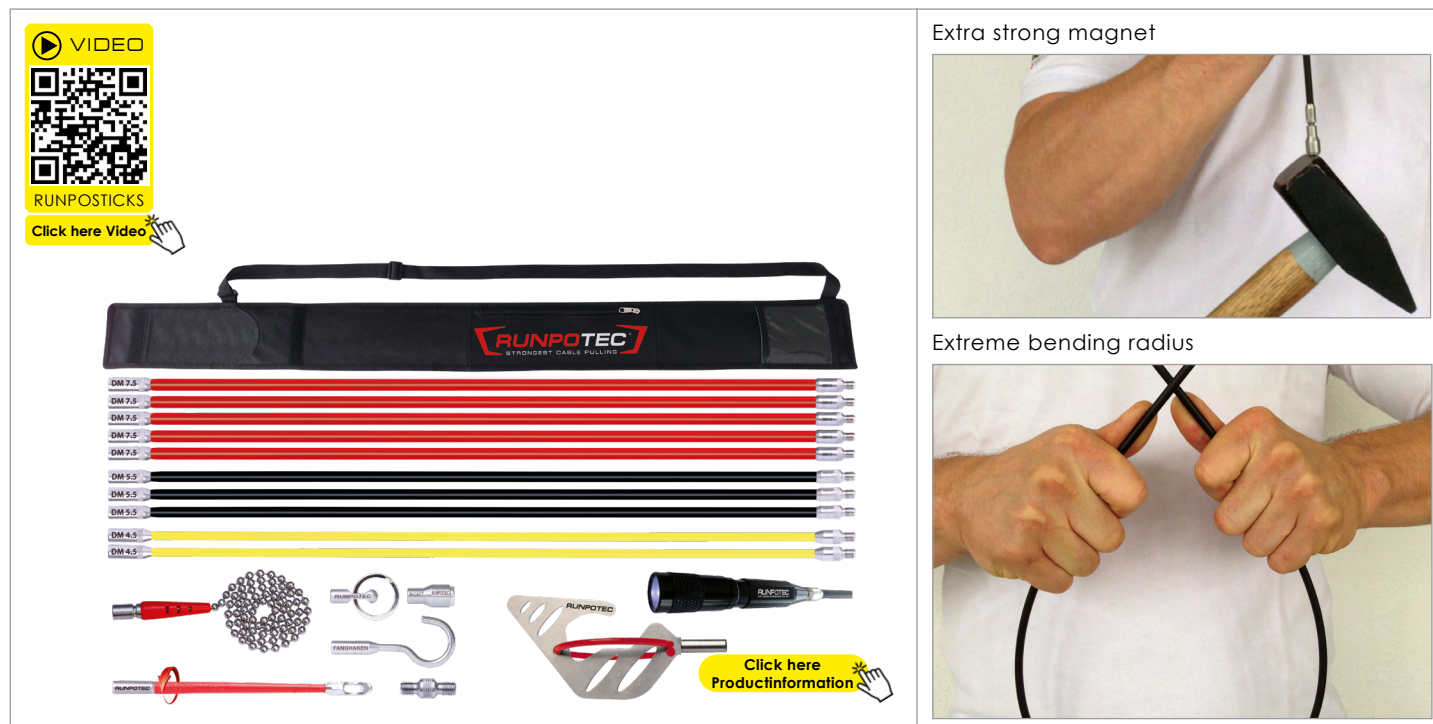
Standard - Item no.: 10016



RUNPOSTICKS Comfort Package 19-parts

Pulling aid for not guided pipelines

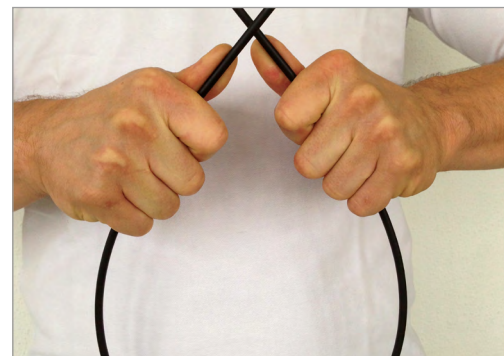
Item no.: 10020



Extra strong magnet



Extreme bending radius

**DATA**

Recommended trade price in EURO / excluding VAT

ITEM NO.:	10020
PRICE €	€ 139,00
WEIGHT NET	1,02 kg
DIMENSION	L 1010 mm x B 105 mm x H 45 mm
MATERIAL	Basalt rods, plastic-coated
THREAD	RTG Ø 6 mm
EAN-CODE	9120045473100

DESCRIPTION

The new basalt technology allows extreme bending radii, however, the rods retain high dimensional stability. All connections have a RUNPOTEC RTG Ø 6 mm thread, have no butt edges or thread transitions. Objects weighing up to 2.5 kg can be held with the magnet. In combination with the magnet, the ball chain enables targeted locating or guiding to wall openings. In addition, the Comfort package includes the special sliding hook and can easily overcome obstacles up to 8 cm high thanks to the tilt function. The shockproof LED lamp also included has a very high luminosity and extremely long illumination time due to its AAA Duracell battery. All accessories can be perfectly stored in the practical storage bag with carrying strap.

Optimal area of application: suspended ceilings, cable ducts, hollow walls, retroactive cabling for non-routed cables, underfloor shafts, various bushings and much more.

Application video: a short, very informative application video can be viewed by scanning the QR code or on www.RUNPOTEC.com.

Scope of supply: 5 x 1 m RUNPOSTICKS red (hard) Ø 7,5 mm, 3 x 1 m RUNPOSTICKS black (medium) Ø 5,5 mm, 2 x 1 m RUNPOSTICKS yellow (soft) Ø 4,5 mm, 1 x RG7 RUNPOGLEITER, 1 x extra strong magnet, 1 x ball chain, 1 x eyelet with ring, 1 x fishing hook, 1 x connecting thread, 1 x storage bag, 1 x special sliding hook, 1 x shockproof LED lamp

ADVANTAGES

- 30% higher load capacity due to basalt fibre technology
- Plastic-coated - therefore no penetration of the fibres under the skin
- Extreme bending radius
- Ultra strong magnet
- Sliding hook with tilt function
- Shockproof LED Lamp
- Practical storage bag
- Stainless steel connection press fitted and bonded

INFORMATION

Compatible with:

RC2 Inspection camera

30 m - Item no.: 10140

50 m - Item no.: 10141

[Click here Productinformation](#)
**RC3 Inspection camera (digital)**

15 m - Item no.: 10214

[Click here Productinformation](#)
