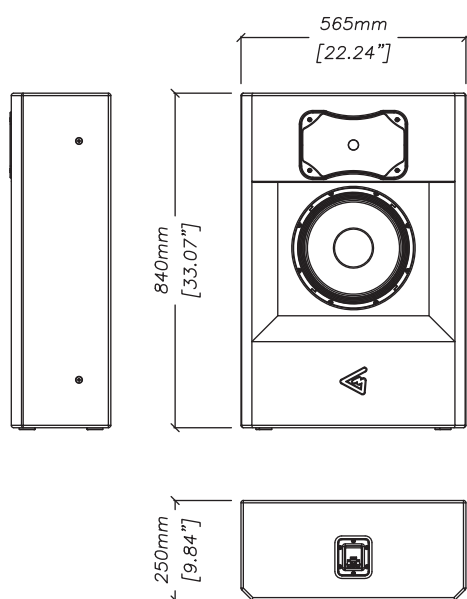


M12-C

CENTER MAIN SPEAKER

M-12C is a center speaker for MAG Theatron PERFORMANCE main screen array. It is based on a long-excursion woofer and an HF driver with an extremely low distortion. With horn coverage being horizontally symmetrical, M-12C is matched perfectly with M-12L and M-12R.



CONNECTIONS

Use a Hi-pass filter to prevent speaker damage and distorted sound by eliminating low non-audible frequencies in the input signal.

Do not exceed the input powers, abovementioned in the specifications, while exploiting the speaker system.

The speaker system comes with banana terminals for connection to the amplifier.

SAFETY INSTRUCTIONS

1. Do not pour liquids on the speaker system - this may cause driver cone destruction and an unappealing speaker appearance. Do not allow direct sunlight on the speaker cone - this will reduce its resource dramatically. For fire safety do not install the speaker system near open flames or heating elements.
2. Do not use the speaker system with the damaged connector or speaker cable - this is an electric shock hazard and fire hazard.
3. Make sure the speaker system is firmly set up on the ceiling, stage, or wall (where applicable).
4. While setting the speaker system up on a slope or slippery surface, make necessary arrangements to avoid its movement due to its vibration.
5. This loudspeaker system is capable of delivering a significant sound pressure level. To avoid permanent or temporary hearing damage or loss, prolonged exposure to sound pressure levels exceeding values over 90 dB should be limited.



SPECIFICATIONS

Frequency response (± 3 dB)	50 - 20000 Hz
Frequency range (-10 dB)	41 - 22000 Hz
Max continuous SPL	121,5 dB
Sensitivity (1W/1m half-space)	97 dB
High-frequency driver	1-inch (1,75 inch voice coil) titanium dome
Low/Mid frequency woofer	12-inch (2,5 inch voice coil) 4-wave long excursion suspension
Coverage	90° H x 50° V Coverage Control HF horn horizontal axis panned straight
Nominal impedance	4 Ohm
Power rating	300 W
Connectors	Banana terminal
Mounting	4 x M8 points for antishock wall mounting
Dimension (W x H x D)	565 x 840 x 250 mm
Net weight	32,2 kg

MAIN SPEAKERS

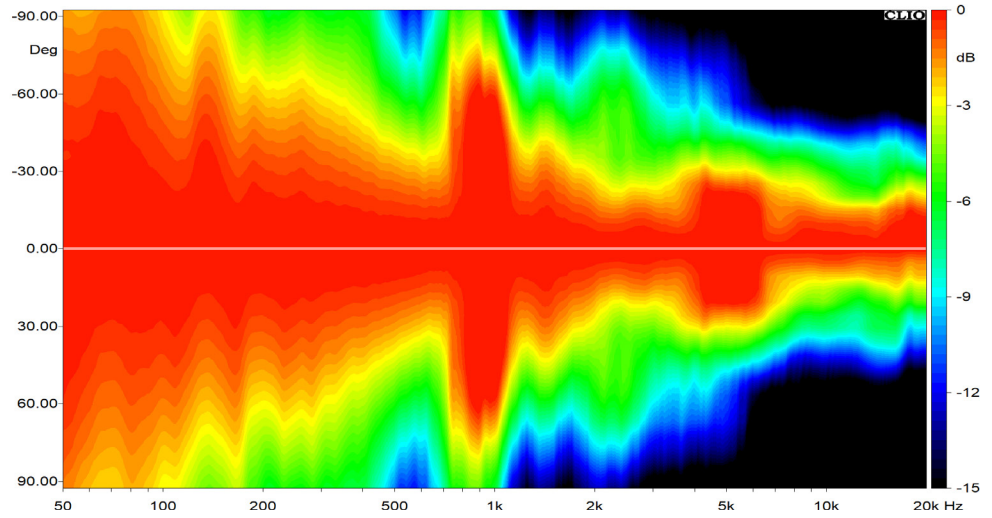
Series



Directivity and frequency graphs

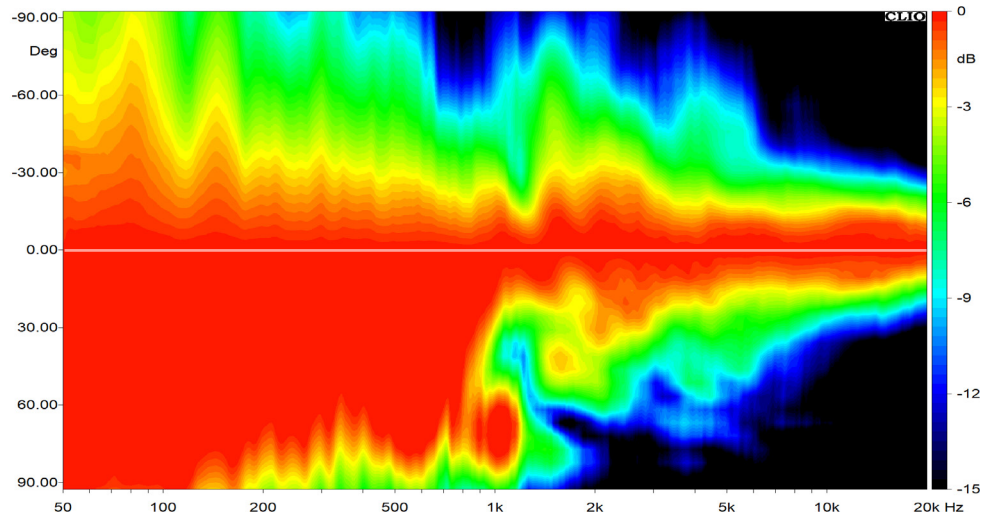
M12-C

Horizontal Directivity



M12-C

Vertical directivity



M12-C

Frequency response

