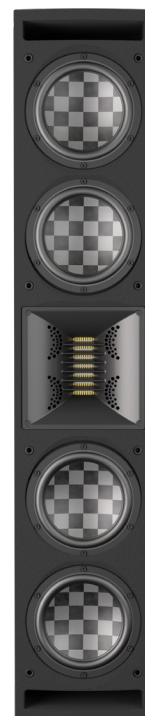


# FALCON 46

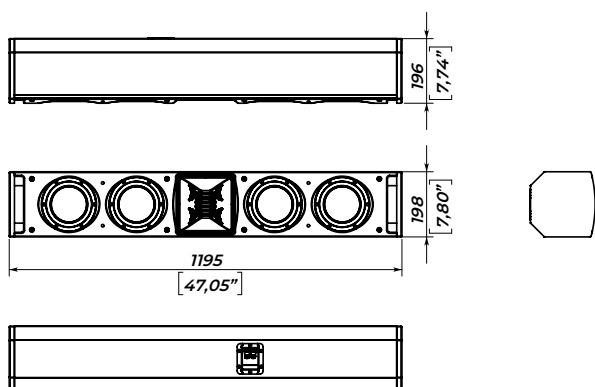
LED ready slim screen speaker



Introducing the FALCON 46: a pinnacle of home entertainment sophistication, ushering in a new era of immersive experiences that rival the brilliance of high-contrast direct view LED screens. Its cutting-edge 3-way design incorporates the finest components available, featuring ultra-low resonant TeXtreme® woofer cones for unparalleled audio quality.

The FALCON 46's compact form ensures seamless integration into the most confined spaces, while its versatile vertical and horizontal configurations make it ideal for placement above or beside your screen.

### DIMENSIONS



### CONNECTIONS

Use a Hi-pass filter to prevent speaker damage and distorted sound by eliminating low non-audible frequencies in the input signal.

Do not exceed the input powers, abovementioned in the specifications, while exploiting the speaker system.

The speaker system comes with banana terminals for connection to the amplifier.

### SAFETY INSTRUCTIONS

1. Do not pour liquids on the speaker system - this may cause driver cone destruction and an unappealing speaker appearance. Do not allow direct sunlight on the speaker cone - this will reduce its resource dramatically. For fire safety do not install the speaker system near open flames or heating elements.

2. Do not use the speaker system with the damaged connector or speaker cable - this is an electric shock hazard and fire hazard.

3. Make sure the speaker system is firmly set up on the ceiling, stage, or wall (where applicable).

4. While setting the speaker system up on a slope or slippery surface, make necessary arrangements to avoid its movement due to its vibration.

5. This loudspeaker system is capable of delivering a significant sound pressure level. To avoid permanent or temporary hearing damage or loss, prolonged exposure to sound pressure levels exceeding values over 90 dB should be limited.

### SPECIFICATIONS

|  |   |
|--|---|
| Frequency response ( $\pm 3$ dB)   | 50 - 21000 Hz   |
| Frequency response (-10 dB)  | 45 - 24000 Hz   |
| Max continuous SPL <sup>2</sup>  | 117 dB  |
| Sensitivity (1W/1m half-space) <sup>1</sup>  | 93,5 dB   |
| High-frequency driver  | 3,3" Air Motion Transformer                             |
| Mid frequency driver   | 4 x 2-inch midrange, 0,75-inch voice coil               |
| Low/Mid frequency driver   | 4 x 6,5-inch woofer, 1,4-inch voice coil, TeXtreme cone |
| Coverage   | 90° H / 40° V or 40° H / 90° V rotatable                |
| Nominal impedance  | 4 Ohm   |
| Power rating <sup>3</sup>  | 300 W   |
| Mounting   | U-bracket   |
| Connectors   | Banana terminal   |
| Dimension (W x H x D)  | 1195 x 198 x 196 mm                                     |
| Net weight   | 12 kg   |
| <sup>1</sup> - dB SPL, IEC 60268-5 pink noise, 1W / 1m, half- and free- space<br><sup>2</sup> - dB SPL RMS, IEC 60268-5 pink noise, measured on nominal power<br><sup>3</sup> - 2 hour power test, IEC filtered noise, 6 dB crest factor |   |