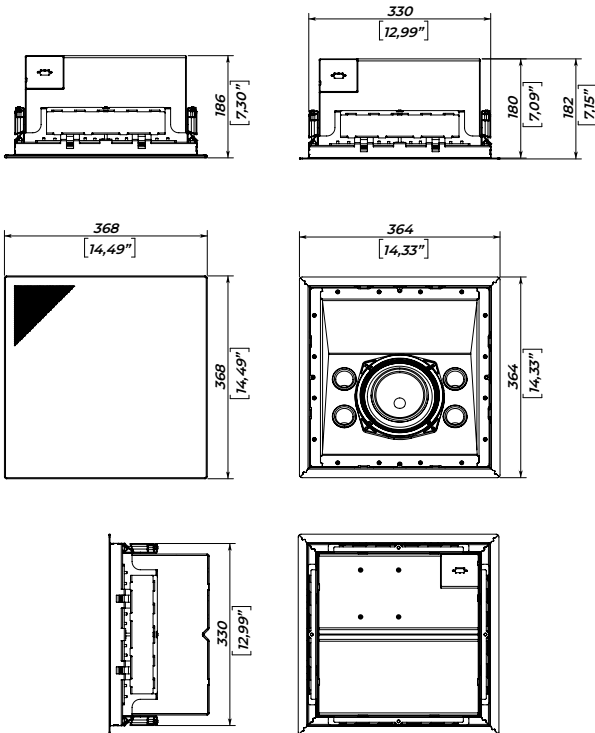


# CS-6

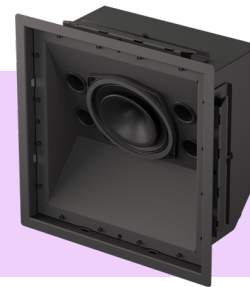
## In-surface coaxial surround

The CSX-6 is the ultimate, precisely aimed yet discreet surround speaker, designed for invisible installation directly into walls or ceilings. Featuring the 6" coaxial driver, this speaker delivers the perfect sound positioning precision. Thanks to its 20° tilted sound axis, the CSX-6 is the ideal choice for overhead top surround or side surround positions.



### SAFETY INSTRUCTIONS

1. Do not pour liquids on the speaker system - this may cause driver cone destruction and an unappealing speaker appearance. Do not allow direct sunlight on the speaker cone - this will reduce its resource dramatically. For fire safety do not install the speaker system near open flames or heating elements.
2. Do not use the speaker system with the damaged connector or speaker cable - this is an electric shock hazard and fire hazard.
3. Make sure the speaker system is firmly set up on the ceiling, stage, or wall (where applicable).
4. While setting the speaker system up on a slope or slippery surface, make necessary arrangements to avoid its movement due to its vibration.
5. This loudspeaker system is capable of delivering a significant sound pressure level. To avoid permanent or temporary hearing damage or loss, prolonged exposure to sound pressure levels exceeding values over 90 dB should be limited.



### SPECIFICATIONS

Frequency range (-6/+3 dB)	85 - 18000 Hz
Max continuous SPL	115,5 dB
Sensitivity (1W/1m half-space)	94 dB
Sensitivity (1W/1m) (free-space)	91 dB
Drivers	6" Coaxial
Front panel tilt angle	20°
Coverage	100° x 100°
Nominal impedance	4 Ohm
Power rating	150 W
Mounting	Built-in mounting frame
Connectors	Phoenix
Dimension (W x H x D)	368 x 368 x 186 mm (w/ grill)
	364 x 364 x 182 mm (w/o grill)
Net weight	7,6 kg

### CONNECTIONS

Use a Hi-pass filter to prevent speaker damage and distorted sound by eliminating low non-audible frequencies in the input signal.

Do not exceed the input powers, abovementioned in the specifications, while exploiting the speaker system.

The speaker system comes with Phoenix for connection to the amplifier.