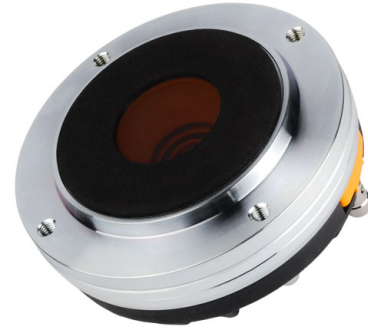


# HF142

1.4" - 80 W - 110 dB - 8 Ohm



## NOMINAL SPECIFICATIONS

Throat Diameter	35.6 mm (1.4 in)
Overall Diameter	115 mm (4.53 in)
90° Mounting Holes Diameter (4xM6)	102 mm (4.02 in)
Depth	54.5 mm (2.15 in)
<b>Net Weight</b>	<b>1.64 kg (3.6 lb)</b>
Shipping Box (Single carton box)	185 x 170 x 102 mm (7.3 x 6.7 x 4.0 in)
Shipping Weight	1.95 kg (4.3 lb)

## PART NUMBER

Push Terminals - 8 Ohm Version	00654272
--------------------------------	----------

## NOTES:

- Driver mounted on **FaitalPRO LTH142 Horn**
- Perforated suspension for acoustic tuning
- (1) 2 Hours Test According to AES 2-1984 Rev. 2003
- (2) Maximum power is defined as 3dB greater than nominal power.
- (3) 12 dB/oct or higher slope high-pass filter
- (4) Averaged within the frequency range
- (5) The phase plug is recessed from the driver's exit which is at the end of a conical adaptation horn.

## TECHNICAL PARAMETERS

Nominal Impedance	8 Ohm
Minimum Impedance	8.4 Ohm
<b>AES Power above 0.9 kHz (1)</b>	<b>80 W</b>
AES Power above 0.65 kHz	25 W
<b>Maximum Power above 0.9 kHz (2)</b>	<b>160 W</b>
Maximum Power above 0.65 kHz	50 W
Minimum Crossover Frequency (3)	0.9 kHz
<b>Sensitivity (1W/1m) (4)</b>	<b>110 dB</b>
Frequency Range	0.7÷18 kHz
<b>Voice Coil Diameter</b>	<b>65 mm (2.56 in)</b>
<b>Winding Material</b>	<b>Al</b>
Former Material	Kapton
<b>Diaphragm Material</b>	<b>Ketone Polymer</b>
Diaphragm Shape	Dome
Winding Depth	2.1 mm (0.08 in)
Magnetic Gap Depth	4.2 mm (0.17 in)
Flux Density	1.8 T
Magnet	Neodymium Ring
Re	6.7 Ohm
Phase Plug Design	Annular
Exit Angle (5)	29° Conical
NET Air Volume filled by HF Driver	0.4 dm <sup>3</sup> (0.014 ft <sup>3</sup> )

