



## User Manual

HDMI 2.0 Bi-directional Switcher 4K (60Hz 4:4:4) HDR

**Model PT-SW-HD3**

Designed in Germany

## Preface

Read this user manual carefully before using this product. Pictures shown in this manual are for reference only. Different model layouts and specifications are subject to the physical product.

This manual is for operation instructions only, not for any maintenance usage.

In the constant effort to improve our product, we reserve the right to make changes in functions or parameters without prior notice or obligation.

## Trademarks

Product model and logo are trademarks. Any other trademarks mentioned in this manual are acknowledged as the properties of the trademark owner. No part of this publication may be copied or reproduced without the prior written consent.

## FCC Statement

This equipment generates, uses and can radiate radio frequency energy and, if not installed and used in accordance with the instructions, may cause harmful interference to radio communications. It has been tested and found to comply with the limits for a Class B digital device, pursuant to part 15 of the FCC Rules. These limits are designed to provide reasonable protection against harmful interference in a commercial installation.

Operation of this equipment in a residential area is likely to cause interference, in which case the user at their own expense will be required to take whatever measures may be necessary to correct the interference.

Any changes or modifications not expressly approved by the manufacture would void the user's authority to operate the equipment.



**REACH | 1907/2006/EU**

**ROHS | 2011/65/EU**

PureLink hereby declares that this product **PureTools PT-SW-HD3** complies with Directives 1907/2006/EU und 2011/65/EU.

**EMC / LVD (Electro Magnetic Compatibility / Low Voltage Directive)**

PureLink GmbH hereby declares that this product **PureTools PT-SW-HD3** complies with Directives 2014/30/EU and 2014/35/EU. The full text of the EU Declaration of Conformity is available at the following Internet address:

[http://www.purelink.de/ce/4251364706961\\_CE.pdf](http://www.purelink.de/ce/4251364706961_CE.pdf)



## SAFETY PRECAUTIONS

To insure the best from the product, please read all instructions carefully before using the device. Save this manual for further reference.

- Unpack the equipment carefully and save the original box and packing material for possible future shipment
  - Follow basic safety precautions to reduce the risk of fire, electrical shock and injury to persons.
  - Do not dismantle the housing or modify the module. It may result in electrical shock or burn.
  - Using supplies or parts not meeting the products' specifications may cause damage, deterioration or malfunction.
  - Refer all servicing to qualified service personnel.
  - To prevent fire or shock hazard, do not expose the unit to rain, moisture or install this product near water.
  - Do not put any heavy items on the extension cable in case of extrusion.
  - Do not remove the housing of the device as opening or removing housing may expose you to dangerous voltage or other hazards.
  - Install the device in a place with fine ventilation to avoid damage caused by overheat.
  - Keep the module away from liquids.
  - Spillage into the housing may result in fire, electrical shock, or equipment damage. If an object or liquid falls or spills on to the housing, unplug the module immediately.
  - Do not twist or pull by force ends of the optical cable. It can cause malfunction.
  - Do not use liquid or aerosol cleaners to clean this unit. Always unplug the power to the device before cleaning.
  - Unplug the power cord when left unused for a long period of time.
  - Information on disposal for scrapped devices: do not burn or mix with general household waste, please treat them as normal electrical wastes.
-

## Introduction to PT-SW-HD3

The PT-SW-HD3 is an ultra-thin bidirectional 3x1/1x3 HDMI2.0 switcher with 4 HDMI ports. The switcher supports HDMI resolutions up to 4K@60Hz 4:4:4.

## Feature

- Supports HDMI2.0 4k@60Hz 4:4:4.
- HDCP2.2 compliant.
- Supports bi-directional switching.
- Supports HDR.
- Supports Hot-Plug detection.
- No need of external power supply.
- Supports smart EDID management.

## Package Content

Please take an inventory of the package contents to ensure you have all the items listed below. If anything is missing or damaged, please contact your distributor for a replacement.

- 1 x PT-SW-HD3
- 1 x Velcro Tape
- 1 x User Manual

## Panel Description

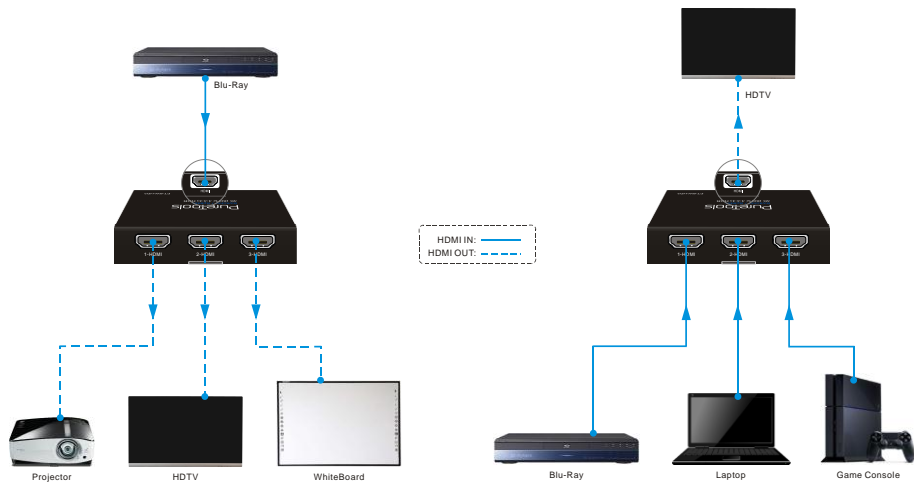


- ① SWITCH: Press this button to switch 1-HDMI, 2-HDMI, or 3-HDMI as input or output.
- ② IIN/OUT: Press this button to select the HDMI(③) as input or output.
- ③ HDMI: Connect with HDMI source or display.
- ④ IN: Illuminates blue when the HDMI port(③) is selected as input.
- ⑤ OUT: Illuminates blue when the HDMI port(③) is selected as output.
- ⑥ 1/2/3-Signal LED: Illuminates blue when the corresponding source or display is selected.
- ⑦ 1/2/3-HDMI: 3 HDMI ports, connect with sources or displays.

## Specification

Video	
Input & Output	(4) HDMI
Connector	(4) 19-pin type-A female HDMI
General	
Max Resolution	4Kx2K@60Hz 4:4:4
HDMI Standard	HDMI2.0
HDCP Compliance	HDCP2.2 pass-through
EDID Management	Built-in EDID
Power Consumption	4W (Max)
Operation Temperature	-10~40℃
Storage Temperature	-15~55℃
Relative Humidity	10%-90%
Dimensions (W*H*D)	80mm x 16mm x55mm
Net Weight	131g

## System Diagram





---

## After-Sales Service

If there appear some problems when running the product, please check and deal with the problems referring to this user manual. Any transport costs are borne by the users during the warranty.

**1) Product Limited Warranty:** This product will be free from defects in materials and workmanship for **two years** (The purchase invoice shall prevail).

Proof of purchase in the form of a bill of sale or receipted invoice which is evidence that the unit is within the Warranty period must be presented to obtain warranty service.

**2) What the warranty does not cover (servicing available for a fee):**

- Warranty expiration.
- Factory applied serial number has been altered or removed from the product.
- Damage, deterioration or malfunction caused by:
  - Normal wear and tear.
  - Use of supplies or parts not meeting our specifications.
  - No certificate or invoice as the proof of warranty.
  - The product model showed on the warranty card does not match with the model of the product for repairing or had been altered.
  - Damage caused by force majeure.
  - Servicing not authorized by distributor.
  - Any other causes which does not relate to a product defect.
- Delivery, installation or labor charges for installation or setup of the product.

**3) Technical Support:** For any questions or problems, contact your distributor or reseller and tell them the respective product name and version, the detailed failure situation as well as the formation of the cases.





## Asking for Assistance

**Technical Support:**

Phone: +49 5971 800299 - 0

Fax: +49 5971 800299 – 99

**Technical Support Hours:**

8:30 AM to 5:00 PM Monday thru Thursday

8:30 AM to 4:00 PM Friday

**Write to:**

PureLink GmbH

Von-Liebig-Straße 10

D - 48432 Rheine

[www.purelink.de](http://www.purelink.de)

[info@purelink.de](mailto:info@purelink.de)

---